

Clay Pipes

from

Gorteens Castle Co. Kilkenny

by

Joe Norton

Clay Pipes

from Gorteens Castle, Co. Kilkenny.

This is a small assemblage of pipes, 50 pieces in all, comprising stems and bowls.

There are 40 stem pieces and 10 bowls, 9 complete and 1 bowl fragment.

The Stems:

A mixture of 17-19th.Century pieces, mostly 17th. but some late 19th. Century pieces. Some of these, and some of the bowls also show signs of severe wear, the surfaces being much abraded.

The Bowls:

One 17th. Century bowl fragment and nine complete bowls of the period 1640-1720.

There are three Flat-Heeled pipes, ranging in date from c.1670-1720. One of these (93E013:107) is very similar to Atkinson's type 2a Broseley pipe.

There are six spurred pipes, ranging in date from c. 1640-1710.

The overall date range, excluding some 19th.Century stems, is 1640-1720.

References:

Atkinson, D.R., 1975. Tobacco Pipes of Broseley, Shropshire, Hart-Talbot, Saffron Walden, Essex.

Oswald, A., 1975. Clay Pipes for the Archaeologist, BAR 14, Oxford

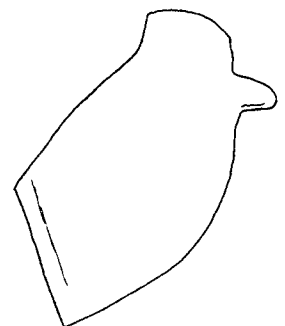
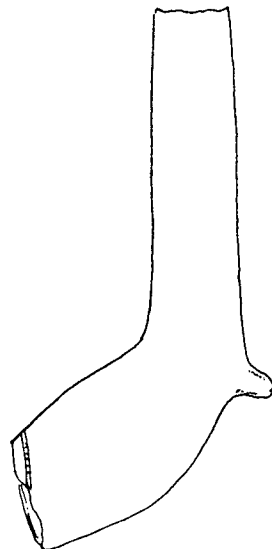
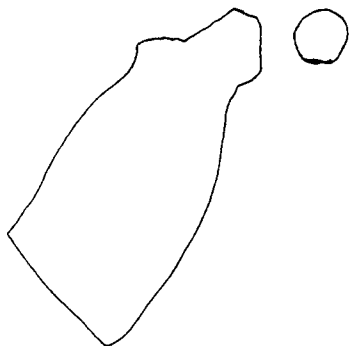
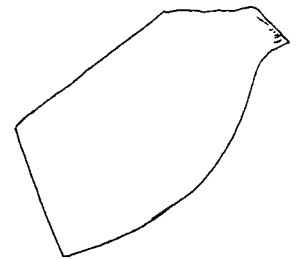
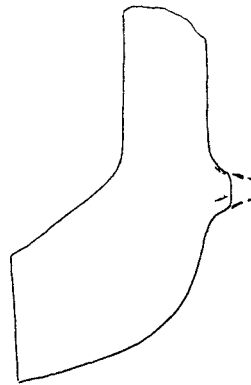
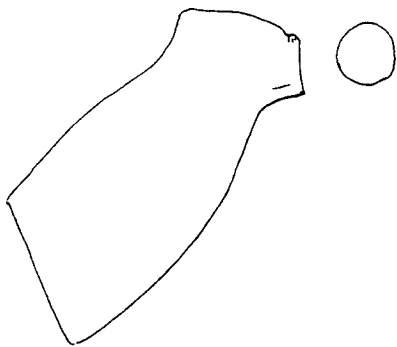
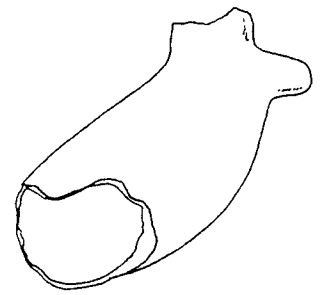
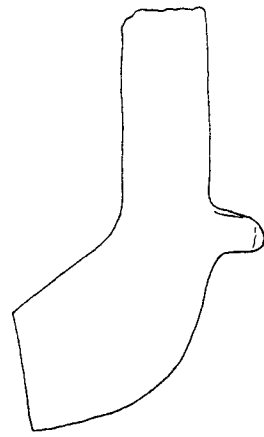
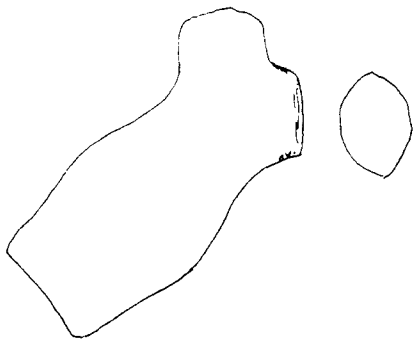
Site Gorteens Castle, Co. Kilkenny

County Kilkenny

Grid Ref: O.S. 6" 47

Excavator Heather King

No.	Ex. No.	Date	Comment	Context
1	93E013: 182	1680-1710		F7
2	93E013: 607	1690-1720		F81
3	93E013: 107	1670-1690	Similar to Broseley Type 2a (Atkinson, 1975)	F6
4	93E013: 588	1640-1670	Oswald type 17	F62
5	93E013: 100	1650-1670		F6
6	93E013: 102	1650-1670		F6
7	93E013: 624	1660-1680		F10
8	93E013: 245	1660-1690		F6
9	93E013: 246	1690-1710		F6



(93E013:107/102/100/246/245)



(93EO13:182/607/588/624)

